



# RAZEL-BEC

FAYAT

DU CŒUR À L'OUVRAGE



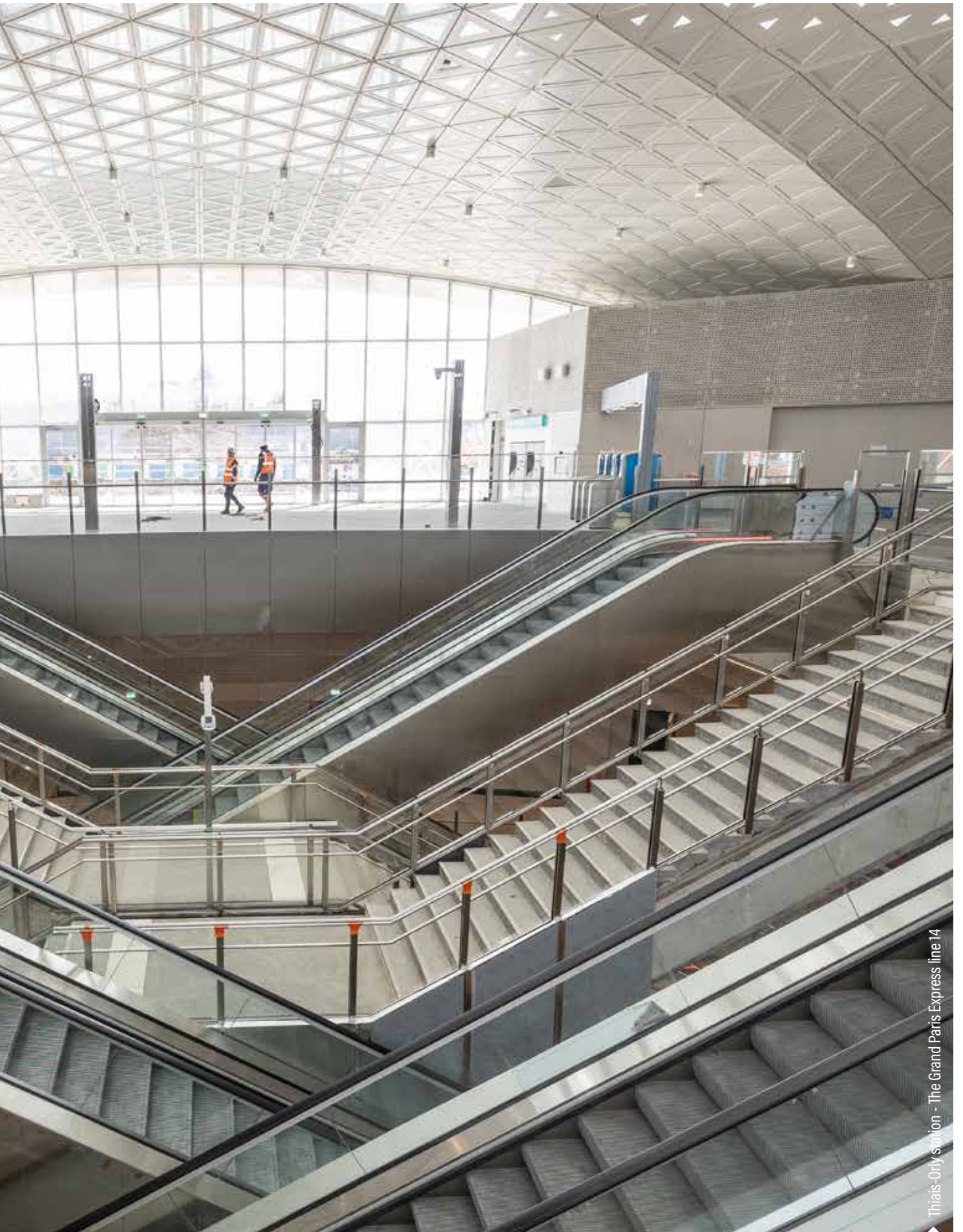
# BUSINESS REVIEW

- 2024 -

# CONTENTS

|   |    |
|---|----|
| ◆ <b>INTRO</b> .....                    | 4  |
| ◆ <b>COMPANY<br/>PRESENTATION</b> ..... | 6  |
| ◆ <b>KEY FIGURES</b> .....              | 8  |
| ◆ <b>ACTIVITY BY SCOPE</b> .....        | 12 |
| ◆ <b>MAJOR PROJECTS</b> .....           | 12 |
| ◆ <b>LOCAL REGIONS</b> .....            | 16 |
| ◆ <b>INTERNATIONAL REACH</b> .....      | 20 |
| ◆ <b>OUR SUBSIDIARIES</b> .....         | 22 |





Thiais-Orly station - The Grand Paris Express line 14

# A LOOK BACK AT 2024 WITH LAURENT FAYAT, PRESIDENT



## ◆ A renewed commitment to urban mobility

In 2024, Razel-Bec continued to play a central role in the development of urban mobility in Greater Paris. Our teams have completed some iconic projects, notably the Grand Paris Express line 15, with the handover of the Saint-Maur - Créteil station after seven years of work. The inauguration of the extension to the EOLE RER E line also marks a significant turning point in connectivity between the east and west of Paris. On line 16, construction work on the Chelles tunnel and station progressed as expected, while the Virginie tunnel boring machine began its 6.2 km journey under Paris-Charles de Gaulle airport on line 17.

## ◆ The strength of multi-skilling in France and abroad

Our numerous projects in Île-de-France, Occitanie, PACA and AuRA have contributed to the development and improvement of the quality of life in these regions. Internationally, our teams completed major projects in Central, West and East Africa, as well as in Zambia and La Réunion. These projects demonstrate our ability to provide technical solutions for infrastructure projects that are essential to urban development, mobility and energy production.

## ◆ A forward-looking vision

Our vision for the future remains clear: to continue to innovate and build sustainable infrastructures that meet the growing needs of our customers and the communities we serve. Driven by strong values and a unifying team spirit, we are determined to maintain our high safety standards and strengthen our commitment to the environment. We are actively contributing to the ecological transition through innovative projects in waste treatment, water and energy resource management, and the electrification of our vehicle fleet.

In conclusion, 2024 was a year rich in achievements and successes. I would like to extend my warmest thanks to all the Razel-Bec teams for their commitment and professionalism. Together, we will continue to build a sustainable and prosperous future for our regions.

**“WE ARE ACTIVELY CONTRIBUTING TO THE ECOLOGICAL TRANSITION THROUGH INNOVATIVE PROJECTS IN WASTE TREATMENT, WATER AND ENERGY RESOURCE MANAGEMENT, AND THE ELECTRIFICATION OF OUR VEHICLE FLEET.”**



Bridge over the Gave d'Oloron - Sorde-l'Abbaye

# COMPANY PRESENTATION

For more than 145 years, Razel-Bec has been involved in all areas of public works in France and around the world, putting its passion and inventiveness to work on all sizes of public works projects.

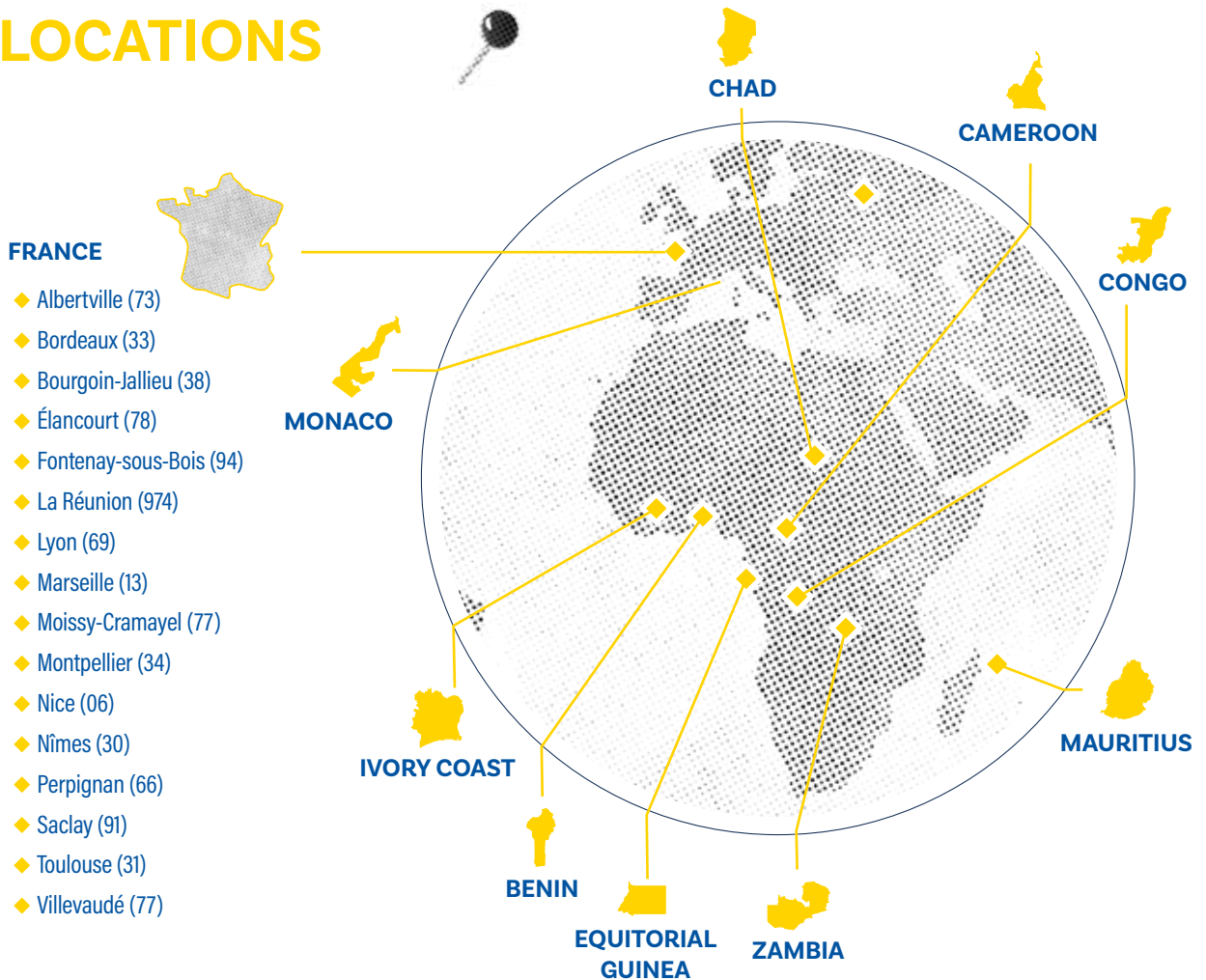
As part of the FAYAT group, France's leading independent construction group and world leader in road-building equipment, Razel-Bec has the autonomy and freedom to innovate and offer a dedicated approach to the most ambitious projects.

Our 4,700 employees work in France and abroad to provide inventive solutions to current and unique public works challenges. They put their hearts into their work, making Razel-Bec a human and collective adventure.

**145**  
YEARS  
OF EXPERTISE



## OUR LOCATIONS



# SPECIALISMS



◆ Grand Paris - Line 16



## ORGANISATION

### OUR LARGE PROJECTS

Expertise in all areas of public works for large-scale projects.

- ◆ **Underground works**
- ◆ **Linear infrastructures**
- ◆ **Civil engineering and engineering structures**
- ◆ **Dams**
- ◆ **Nuclear Defence Industry**

### OUR REGIONS

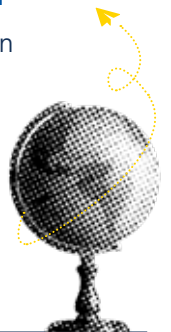
Multi-skilled teams and local presence across all areas

- |   |   |
|---|---|
| <p><b>North</b></p> <ul style="list-style-type: none"> <li>◆ IdF East</li> <li>◆ IdF West</li> <li>◆ Major Projects</li> <li>◆ Urban Earthworks Division</li> </ul> | <p><b>South</b></p> <ul style="list-style-type: none"> <li>◆ Occitanie</li> <li>◆ Auvergne Rhône-Alpes</li> <li>◆ PACA</li> <li>◆ Nouvelle-Aquitaine</li> </ul> |
|---|---|

### INTERNATIONAL REACH

Supporting transportation and access to water and energy.

- ◆ East Africa
- ◆ Central Africa
- ◆ West Africa

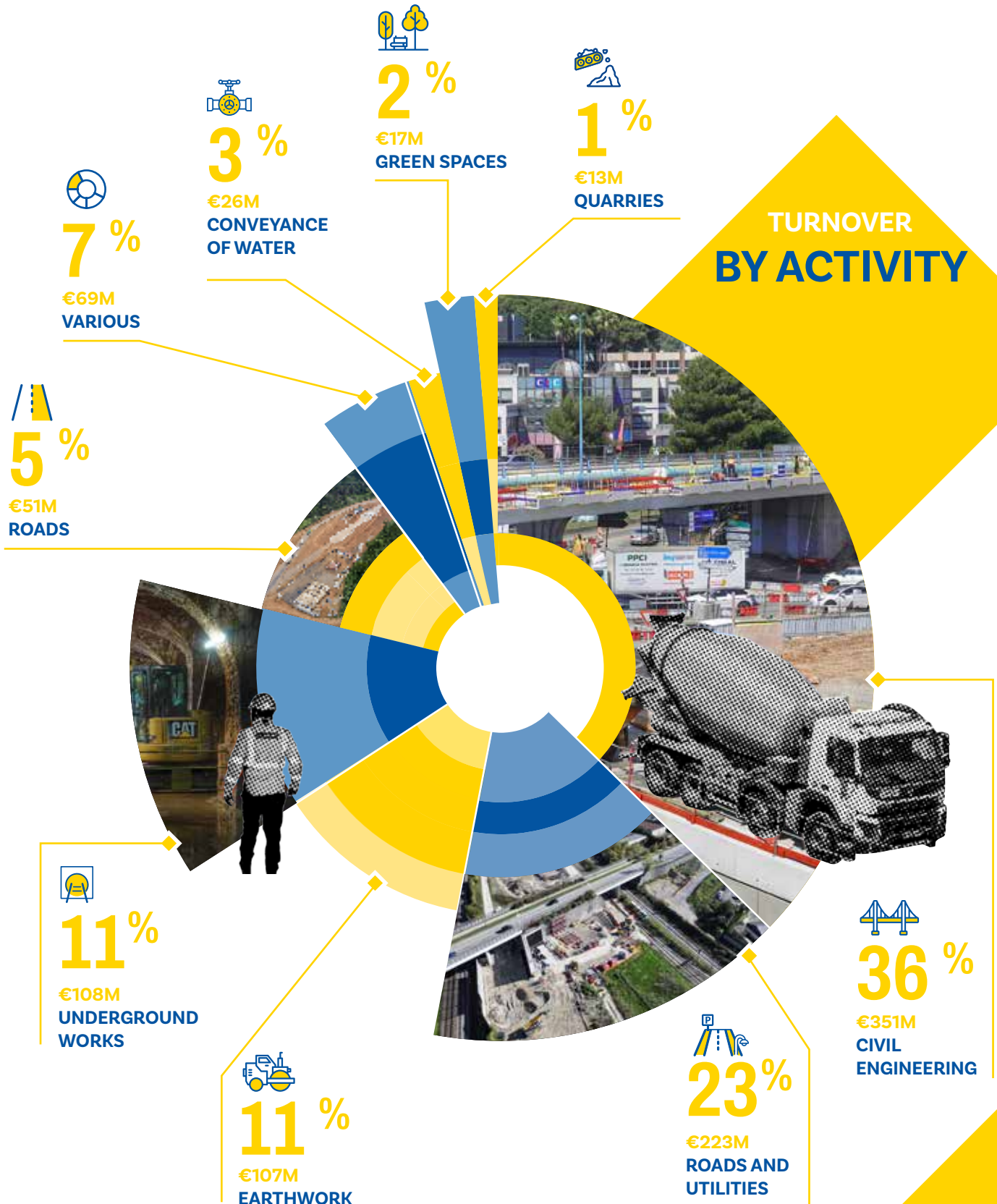


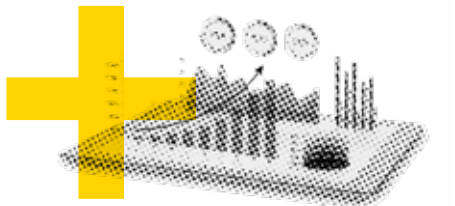
### Our subsidiaries



# KEY FIGURES

## TURNOVER BY ACTIVITY






# 1 BILLION EUROS

IN TURNOVER



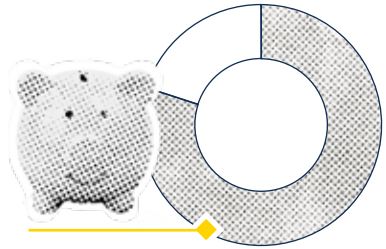
## 4,700

EMPLOYEES



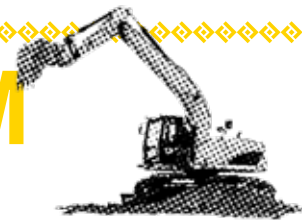
## 24

MONTHS  
of order book



## 81%

OF TURNOVER  
from public or semi-public clients




## €35M

INVESTMENT  
IN EQUIPMENT



## 81/100

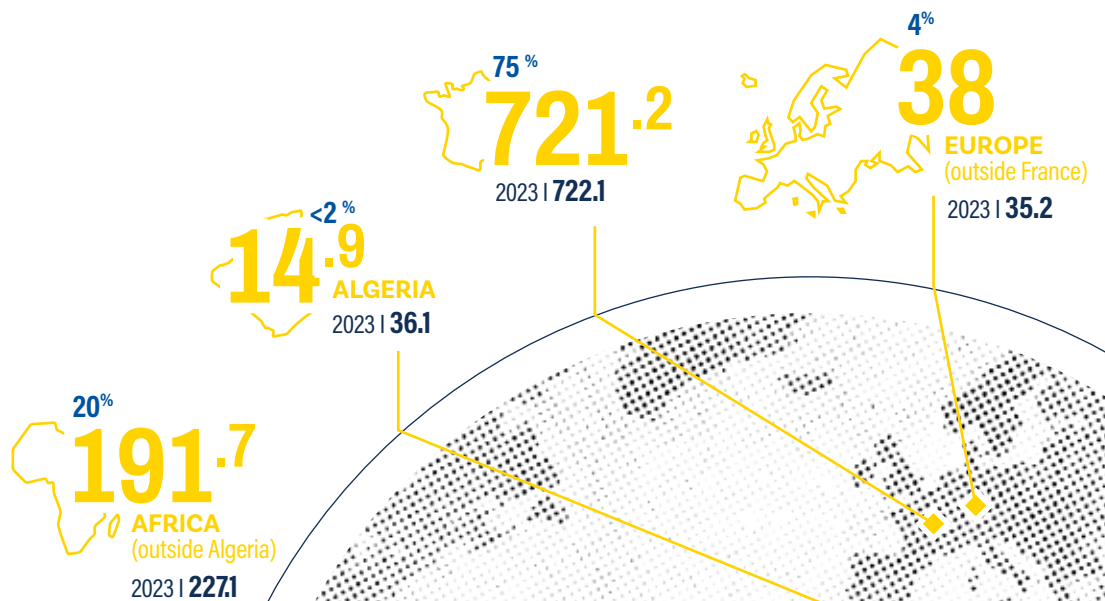
PROFESSIONAL  
GENDER EQUALITY INDEX



## 3.71

GROUP  
FREQUENCY RATE

DISTRIBUTION OF  
TURNOVER  
BY  
GEOGRAPHICAL  
AREA  
(million euros)



# CHANGE OVER 3 YEARS

## IN MILLIONS OF EUROS

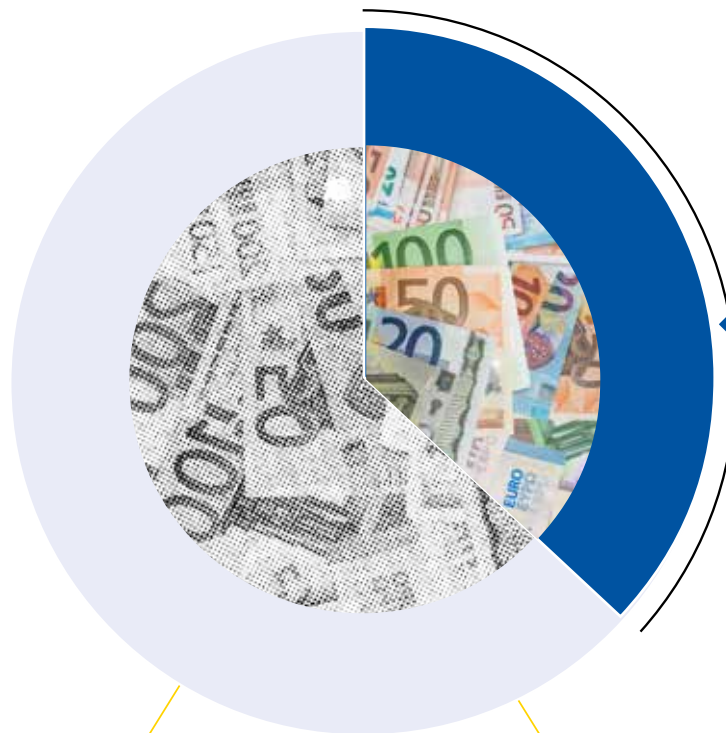
|                               | 2022  | 2023    | 2024         |
|-------------------------------|-------|---------|--------------|
| Shareholders' equity          | 85.3  | 72.7    | <b>71.8</b>  |
| Turnover ex. VAT              | 975.6 | 1,021.3 | <b>965.8</b> |
| - France                      | 724.6 | 722.1   | 721.2        |
| - International               | 251   | 299.2   | 244.6        |
| Order book ex. VAT            | 1,316 | 1,747   | <b>2,089</b> |
| Profit on ordinary activities | 10.2  | 14.5    | <b>15.8</b>  |
| Net result                    | -7.1  | -1.1    | <b>1.5</b>   |



# OUTLOOK 2025

At the end of the 2024 financial year,  
the order book stood at

## 2.1 BILLION EUROS

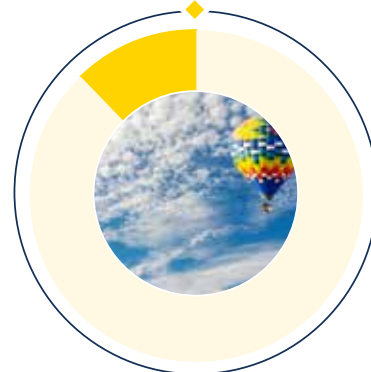


### 37 %

TO BE  
IMPLEMENTED  
IN 2025  
INCLUDING



**88 %**  
WITHIN FRANCE



**12 %**  
ABROAD

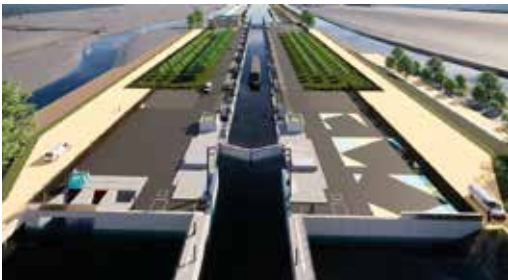


# ACTIVITY BY AREA

Here's an overview of some of our achievements, projects that are underway or completed, and new businesses for 2024.

## LARGE PROJECTS

We are involved in major projects throughout France, demonstrating our expertise and commitment to building sustainable, innovative infrastructures. For several years now, Razel-Bec has also played a central role in the development of urban mobility in Greater Paris.



### SEINE-NORD EUROPE CANAL

#### Montmacq lock

The Seine-Nord Europe Canal, a wide-gauge canal that will cross the Hauts-de-France region and enable barges to travel efficiently between France, Belgium and the Netherlands, is taking shape! At Montmacq, in the Oise department, work has begun by the consortium that includes Razel-Bec, to build one of the 6 locks that will punctuate the route of the boats.

### CADEREAUX IN NÎMES

A joint project between the Underground Works – Large Projects and Languedoc region teams, the Cadereaux d'Uzès and Limites sites in Nîmes saw their tunnel boring machine (TBM) launch in the summer of 2024. Two tunnels are to be created, 990 and 855 metres long, as part of an extensive flood prevention programme. The project will be completed in autumn 2026.



## NEW BUSINESSES



**100%**  
FAYAT  
GROUP



### Roissy-Picardie railway line

Razel-Bec is leading a 100% Fayat consortium in the creation of the Roissy-Picardie railway line. This will link the LGV Interconnexion from Charles de Gaulle airport to the existing Paris-Creil line.

The contract includes the creation of three reinforced concrete gantries, retaining walls, a railway bridge, cut-and-fill works and drainage works.

### NUCLEAR

Orano has entrusted the FAYAT consortium (Razel-Bec and Fayat Métal Grands Projets) with the construction of two buildings as part of its FLEUR (Fourniture Locale d'Entreposage d'Uranium de Retraitement) project. These two 3,000 m<sup>2</sup> halls are intended to store uranium oxide pending its re-use.

**3,000 m<sup>2</sup>**

FOR URANIUM  
OXIDE STORAGE





## GRAND PARIS

### LINE 15 SOUTH

#### ← Saint-Maur - Créteil station

On line 15 of the Grand Paris Express (T2B lot), the Saint-Maur - Créteil (94) station site has come to an end after 7 years of work by Razel-Bec teams.

### LINE 15 SOUTH

#### Bagneux station

Work to fit out and equip Bagneux station on Line 15 South is progressing for the Razel-Bec and Fayat Énergie Services consortium. With platforms 33 metres underground and 4 mezzanine levels to descend to, Bagneux station is one of the deepest in the Grand Paris Express network.

### LINE 15 - WEST-SOUTH

Start of work on Line 15 West-South: as part of the Intencités15 consortium, Razel-Bec teams are playing an active role in this design-build project, which aims to connect several municipalities in western Paris to the public transport network. The project stretches from Sèvres to Courbevoie and includes the construction of 14 kilometres of tunnels, five underground stations and 18 annex structures.

### LINE 16 - LOT 3

Construction work on the tunnel between the rear station at Noisy-Champs and the Bel Air structure at Chelles has been completed, as has earthworks at Chelles station, enabling civil engineering work on the station to begin in early 2025.



### LINE 17 - LOT 3

Following a reconditioning and testing phase, the TBM (Tunnel Boring Machine) used on lines 15 (Camille) and 16 (Maud) has been christened Virginie. An exceptional 650-metre shifting operation enabled her to reach the tunnel entrance, and Virginie began her journey in December 2024: the 6.2-kilometre line will run under Paris-Charles de Gaulle airport, where work has already begun on the future station.

Watch the video of the shifting of the TBM



6.2km

TO DIG



### STATIONS

The delivery of stations for the Paris 2024 Olympic Games is a sure bet!

The stations at Thiais-Orly, Maison Blanche, L'Haÿ-les-Roses, Hôpital Bicêtre and Chevilly-Larue, as well as the 12 annex structures, were delivered turnkey to the operators in June, just in time for the Olympic Games. The Razel-Bec teams have risen to the challenge with flying colours!

5   
**STATIONS COMPLETED BEFORE THE OLYMPIC GAMES**



### EOLE

In 7 years, the Razel-Bec teams, in a consortium with Bouygues Travaux Publics, Eiffage and Sefi-Intrafor, have met countless challenges to complete the construction of a 6.1 km tunnel between Courbevoie and Haussmann Saint-Lazare, the new Neuilly-Porte Maillot station and three annex structures. Inaugurated on 3 May, the extension of the EOLE RER E line marks a significant turning point in connectivity between the east and west of Paris.



## LOCAL REGIONS

Razel-Bec deploys its multi-skilled expertise throughout France contributing to the development and improvement of the quality of life in the regions, where numerous projects are underway to benefit of the regions and their inhabitants.

### ÎLE-DE-FRANCE

#### SEINE-SAINT-DENIS

In Saint-Denis, the old swing bridge over the canal has been replaced by a footbridge dedicated to soft mobility. It breaks down the barriers between the Franc-Moisin and Bel-Air neighbourhoods and, for the Olympic Games, provided a link between line 13 and the Stade de France.



#### HAUTS-DE-SEINE

Work to develop the "entrepont" (a type of walkway) between the Altiplano tower and three neighbouring towers, underway since June 2023, was completed in autumn 2024. Demolition, structural work, masonry, waterproofing, raising a lift shaft to 35 metres... A very urban project with a complex phasing!

#### VAL-DE-MARNE

At Champigny-sur-Marne, the new bus lane - Altival - above the SNCF tracks is taking shape after a year's work.

Two composite steel and concrete girder structures crossing the SNCF tracks, a railway crossing and access ramps with adaptations to the existing structures are due to be delivered by the end of 2026.





**COTEG**  
**SEINE-ET-MARNE**

At Charny (77), the Enviroterre platform (Coteg) was inaugurated. This 16,000 m<sup>2</sup> platform, dedicated to sorting, processing and recycling the region's building site rubble, offers a solution for reuse while controlling environmental impact.

**YVELINES**

**Challenge met!**



Following storm Kirk in October, Coteg carried out emergency work over a weekend to reinforce the embankment near the RER and Transiliens tracks at Saint-Cyr-l'École. Earthworks, backfilling, compacting and redesigning the embankment were quickly expedited to return the tracks to the SNCF, with the support of a 20-wagon work train.



**AUVERGNE-  
RHÔNE-  
ALPES**



**ALBERTVILLE**  
← **SNCF bridge over the Arly**

In Savoie, teams from the AuRA and Bianco offices replaced the old SNCF bridge over the Arly river in Albertville with a new 500-tonne steel structure. The major operation to erect the structure lasted 96 hours, involving more than 60 people and considerable technical resources.



**LYON**  
← **The old Caisse d'Épargne tower**

The old Caisse d'Épargne tower in the heart of Lyon's Part-Dieu district has disappeared. Over a period of 18 months, teams from the AuRA office got rid of the recyclable materials and then proceeded to remove asbestos from the interior, before chipping away at the 15<sup>th</sup> to 5<sup>th</sup> floors, gradually eroding this tower in the middle of the city, followed by mechanical demolition of the final floors. Technical work will be carried out to make way for a new building by 2026.



**VOREPPE (ISÈRE)**  
← **Champ de la Cour Chapays**

In the space of just a few months, Moulin's teams excavated trenches and laid pipes for the wastewater, rainwater and sewerage networks, covering 700 metres of the new Champ de la Cour Chapays district, including a large number of new connections. A masterful operation, with access maintained and heritage trees preserved.





# PROVENCE-ALPES-CÔTE D'AZUR

## MARIONNAISE

The Provence office has embarked on a project to renovate the Marionnaise avalanche gallery between Grenoble and Briançon, a key access point to the Col du Lautaret. The work involves demolishing part of the existing tunnel and then rebuilding a wider, enclosed tunnel 490 metres long to make the road safer from natural hazards (snow, snow-drifts, etc.).

all with active traffic and at an altitude of 2,000 metres.

490m  
GALLERY



## NICE

After more than two years of work devoted to the foundations, digging the trench and then building the inverts and cover slabs, the Côte d'Azur office has completed the first phase of the Voie Mathis project in Nice: the creation of a 1,500-metre carriageway, part of which is a cut-and-cover section, to link the A8 motorway to the Voie Mathis. Project completion scheduled for June 2025.

## MONACO

Fayat Monaco's flagship project, which began in 2019,

the Pasteur block project is nearing completion, with the delivery of the secondary school (and its swimming pool) for the start of the 2024 school year.





# OCCITANIE

## MIDI-PYRÉNÉES

Above the Gave d'Oloron, the Midi-Pyrénées office was busy rebuilding the Sorde-l'Abbaye bridge. The old bridge, dating from the 1930s and showing signs of weakness, was demolished and a new one rebuilt.

Watch the video



## LANGUEDOC OFFICE

In Frontignan (34), the Languedoc office installed the footbridge over the Rhône à Sète canal in mid-November, after a year of preparation and civil engineering work on the supports. The construction of the access staircases and superstructures will take the project through to the first quarter of 2025.



## ROUSSILLON

- ◆ The Roussillon office was chosen by Veolia as part of the public service contract for the city of Perpignan as its agent for the implementation of **major works to develop water infrastructures**. This major project involves laying 60 kilometres of cast-iron pipes, creating valve chambers and lifting stations, a reservoir, a treatment plant, etc. Work began in summer 2024.
- ◆ Teams from the Roussillon office are working on a **major development in Barcarès**, creating a safe link for pedestrians between the town of Barcarès (66) and the Étang de Leucate by building an underpass under the RD83 that is suitable for people with reduced mobility. Given the restricted and protected environments, the work is carried out in two phases. The work on the lake side was completed in the spring, making way for the summer season. The second phase resumed in October and was completed in June 2025.

## LHERM TP

In February 2024, after 11 months of works, LHERM TP teams handed over the new Place de la Libération in Seysses, south-west of Toulouse. A complex phasing plan made it possible to carry out the earthworks, install the networks, build a retention basin and pave 1,600 m<sup>2</sup> of land, while minimising the impact on local residents, shops and municipal services on the square.

**1,600 m<sup>2</sup>**  
OF PAVING 



# NOUVELLE AQUITAINE

## INELFE

Starting in spring 2024, work on the Bay of Biscay electricity interconnection project will link Cubnezais (Gironde) to Gatika (Spain), to improve the quality of electricity supply in both countries. As part of the FASSET consortium, the Razel-Bec and Fayat TP teams are carrying out the ground works, which include around 100 km of trenches and boreholes in France and 13 km in Spain, before the high-voltage cables are rolled out.



# INTERNATIONAL REACH

Razel-Bec is a long-standing partner of international governments, providing technical solutions for major infrastructure projects that are vital to urban development, transportation and energy production.

## WEST AFRICA



### IVORY COAST

**Refurbishment of the Port and Vridi boulevards:** the first phase of the works has been completed, and the two HGV car parks and the access roads are now operational. Phase 2 of the project, involving reconstruction of the boulevards into 2 x 2 lanes of roller-compacted concrete, is under way. Delivery scheduled for summer 2025.

**3 interchanges to improve traffic flow in Abidjan:** begun in 2023, the construction site for 3 interchanges above Cocody's busiest boulevard is progressing, with the external works and foundations phases before the first flyover can begin.



### BENIN

The PAVICC projects (Programme d'Adaptation des Villes au Changement Climatique) on sanitation in the neighbourhoods of Cotonou and Bohicon, which started in 2022, continued throughout the year. These road and drainage works in Cotonou and earthworks and green spaces in Bohicon are designed to reduce the risk of flooding and improve the quality of life for local residents.

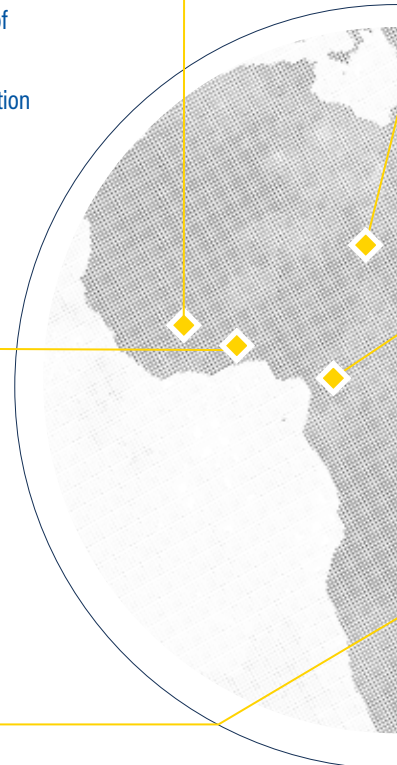
## EASTERN & SOUTHERN AFRICA



### ZAMBIA

September 2024 marks the end of refurbishment work on the Kariba dam. It took more than 7 years to consolidate and protect the geological fault at the foot of the dam and the cavity discovered at the bottom of the pit dug by the force of the water, which threatened the stability of the structure. The structure was able to be safely refilled with water.

↓ Watch the video



# CENTRAL AFRICA



## CHAD

Work starts on the Dourbali-Massénya road. 58 km of road will be created to open up the town of Massénya. 30 months of work to stimulate the local economy by facilitating the transport of goods.

SECTION OF  
**58km**



## CAMEROON

In the far north of Cameroon, the teams are finalising the construction and refurbishment of the road infrastructure in Maroua, covering 7 sections totalling 13 kilometres, facilitating traffic flow and cleaning up neighbourhoods during rainy periods.



## CONGO

After a number of geotechnical difficulties, construction work on two quays (the Quai Multi Vrac and the Quai Multi Fonction) at the Port Autonome de Pointe Noire has been completed.

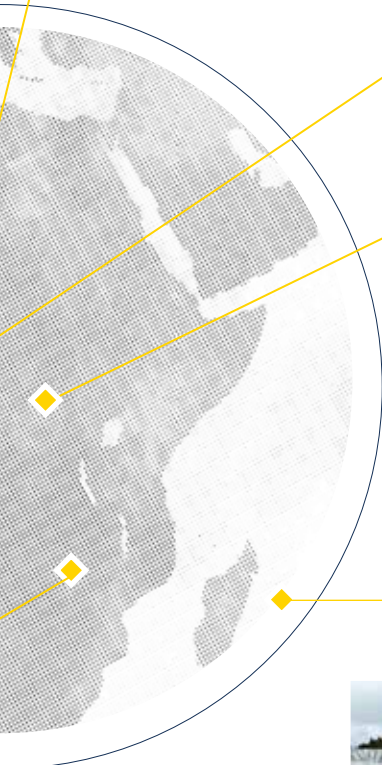


## RAZEL-BEC RÉUNION

On Reunion Island, teams from Razel-Bec, GEObio and Razel-Bec Réunion are finalising work on the Piton Sahales reservoir, which involves building an embankment with a usable storage volume of 350,000 m<sup>3</sup>, waterproofing the reservoir with a geomembrane protected by a concrete lining, the concrete intake canal, the safety spillway, the intake structure and gallery with pipework and motorised equipment, tracks and peripheral platforms.

## RAZEL WATER SOLUTIONS

In Tanzania, the project to reduce Non Revenue Water in Dar Es Salaam, the country's economic centre, was completed after 3 years of work. The aim of this project was to reduce the quantities of drinking water lost in the distribution network through leaks, unauthorised connections or faulty meters, and therefore commercial losses, by analysing the network, carrying out repairs and installing new facilities where necessary.



# OUR DIVISIONS



At the end of 2024, an impressive logistical operation was carried out in the new Seine Ouest district in Asnières (92), with the arrival of 5 majestic 12-metre redwood trees. A successful planting in the heart of the city for the 5 giants, whose adult size can reach 80 metres!



In partnership with the communes of Lunel and Saturargues, LMR aims to ensure the long-term future of its materials processing and sorting facilities, with the planned creation of a circular economy centre by 2025.



GEObio had a very busy year on Reunion Island, with synergy projects within the Group, including the waste treatment and recovery centre on the Saint-Étienne river and waterproofing work on the Piton Sahales hill reservoir.







DU CŒUR À L'OUVRAGE

3 rue René Razel - Christ de Saclay  
91892 Orsay Cedex  
Tel. : +33 (0)1 69 85 69 85

